

## Mirage Swift™ Nasal Pillows System

### COMPONENTS CARD

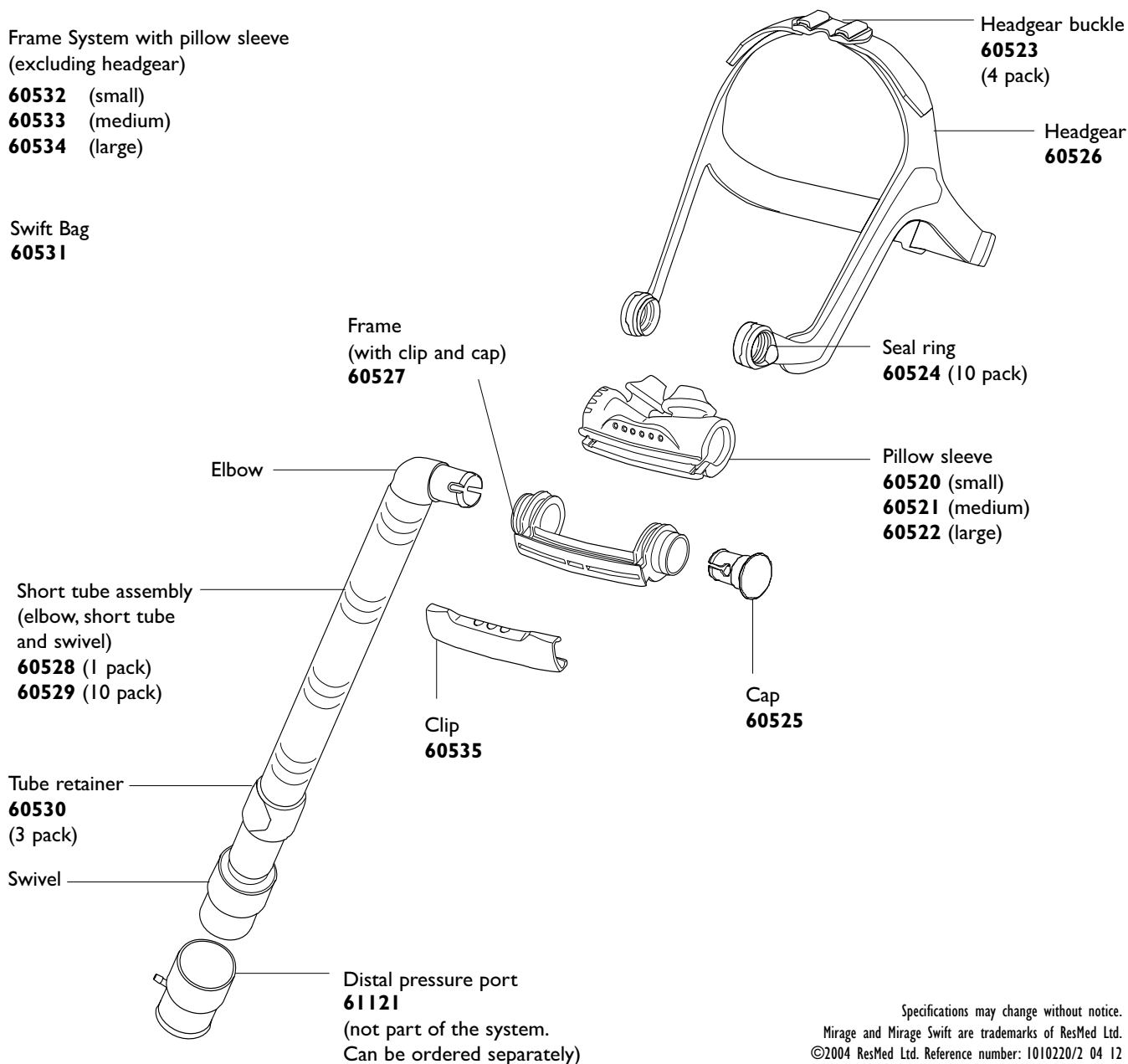
#### Fully Assembled Mirage Swift Nasal Pillows System

Nasal Pillows System **60505**  
(Includes a small, medium and large pillow sleeve)

Frame System with pillow sleeve  
(excluding headgear)

**60532** (small)  
**60533** (medium)  
**60534** (large)

Swift Bag  
**60531**



Specifications may change without notice.  
Mirage and Mirage Swift are trademarks of ResMed Ltd.  
©2004 ResMed Ltd. Reference number: 1010220/2 04 12



## SPECIFICATION - PRINTED MATERIALS

Proprietary Information, not to be reproduced or made available to third parties without prior consent from ResMed and not to be used in any unauthorised way. © ResMed Ltd 2004.

Document No	1010220
Revision	2
Page	1 of 2

Rev	Change Note	Date	Create/Revised by		Checked by	
			Name	Initial & Date	Name	Initial & Date
1	C10672	14/04/04	Meredith Wills		Kathy Prokhovnik	
2	C12187	20/12/04	Meredith Wills		Sue Geercke	

### Mirage Swift Comps Card ENG USA

#### 1. DETAILS

<b>Dimensions:</b>	Mid-atlantic 280 H x 210 W ± 5 mm
<b>Colour of printing:</b>	1 colour process printing
<b>Stock:</b>	150 gsm Novatech Premium Silk
<b>No. Pages:</b>	1 pp (single sided)
<b>Art Work:</b>	As shown on following pages. If retypeset, the same styles and sizes must be maintained
<b>Manufacturer:</b>	External printer

#### 2. RESMED QC INSPECTION REQUIREMENTS

Refer to AU10006 - Printed Materials